

In-Ground Lights E27 or CFL



Recessed Ground Light Modulo Mini IP67



Halogen aluminium recessed floor luminaire with step-resistant cover for outdoor use. Diameter 11cm. GU10 max. 35W IP67
LB-11-A

Cover glass: Clear safety glass.
Maximum static weight load 500 kg.
With GU10 socket for halogen lamp 230V / 35W or LED lamp.
Max. Max. length of the lamp 55mm.
Order the matching lamp from the accessories range at the same time.
Operating voltage 230V
Housing cast aluminium with plastic recessed bowl.
Protection class IP67
Dimensions:
Stainless steel cover round Ø 113mm
Installation cut-out: Ø 96mm
recessed depth 112mm
Recessed luminaire dimensions without recessed canopy: Ø 80mm, depth 110mm
Weight: 1,4 kg



Ground Recessed Spotlight Outdoor IP67 11cm Angular 230V



Halogen aluminium recessed floor luminaire with step-proof, square cover 11cm. GU10 max. 35W IP67
LB-11-C

Cover glass: Clear safety glass.
Maximum static weight load 500 kg.
With GU10 socket for halogen lamp 230V / 35W or LED lamp.
Max. Max. length of the lamp 55mm.

Order the matching lamp from the accessories range at the same time.

Operating voltage 230V
Housing cast aluminium with plastic recessed bowl.
Protection class IP67

Dimensions:
Stainless steel cover, angular 113 x 113mm
Installation cut-out: Ø 106mm (thickest part of the cover) - 80mm (further back)
Installation depth 111 mm
Weight: 1,4 kg

Recessed LED In-Ground Lights



LED Ground Recessed Spotlight Outdoor IP67 11cm Angular



LED aluminium recessed floor luminaire with step-proof, square cover 11cm.
LB-11-CL

Cover: Clear safety glass.
Maximum static weight load 500 kg.
With LED lamp.
Luminous flux 270 lm
Light distribution very wide: 120 °
Light color: 3000K warm white
Power: 3.5W
Operating voltage 230V
Housing cast aluminium with plastic built-in pot.
Degree of protection IP67

Dimensions:
Stainless steel bezel angular 113 x 113mm
Recessed cut-out: Ø 106mm (thickest point on the panel) - 80mm (further back)
Installation depth 111 mm
Weight: 1,4 kg



LED Ground Recessed Luminaire Terra di Gargano Round IP67

Sturdy LED aluminium recessed floor spotlight for outdoor use. Bright light distribution with 15cm tread-proof cover. For driveway, house entrance, access path, garden.

Remaining stock 1 piece

Cover glass: Transparent safety glass.

Protection class IP66

Maximum static weight load 500 kg.

With LED bulb MR16

Light colour: warm white 3000K

Operating voltage 12V

Power: 3,5W

Please order transformer separately.

With 6-fold cover panel for all-round lateral radiation.

Front panel aluminium, grey

Dimensions:

Outer diameter 150 mm

Installation depth 240 mm

Installation cut-out Ø115mm

The cover is slightly curved and stands max. 40mm high in the middle.

LB-16-NV



LED In-Ground Light 6W IP67

Heavy-duty recessed luminaire for outdoor use with LED lamp 6W.

Comparable with 40W halogen light. Diameter 175mm

LB-18LED

LED power 6W

Light colour: 3000K warm white

The illuminant is changeable.

Loadable up to 900 kg.

Connection voltage 230V

max. housing temperature up to 60°C

Protection class: IP67 splash-proof.

Cover ring: die-cast aluminium 175mm,

pane clear glass 160mm

Installation depth 270 mm

Weight: 1,9 kg



In-Ground Lights E27 or CFL



Stable Inground Light IP67 E27 with Reflector

Rigid underground fixture outdoor. For compact fluorescent lamp or incandescent lamp E27.

LB-18R

Recommended illuminants:

Incandescent lamp up to 40W

or energy-saving lamp up to 15W.

Order the matching lamp from the following accessories at the same time.

Bulb length: Max. 128mm

Max. Load capacity: 1000kg

Operating voltage: 110V... 240V

Cover: Tempered clear glass 160mm

Cover ring: polished stainless steel 178mm

Installation depth 290mm

Weight: 2,5 kg



Inground Lights Metal Halide



In Ground Light Drive Over Outdoor MH 70 TS



Drive-in ground recessed spotlight IP67 for illuminating buildings or trees. For metal halide lamp HQI-TS 70W energy-saving.
LB-20X7-0

This luminaire has an extremely stable construction so that it can be rolled over by vehicles without being damaged. The installation is done e.g. in pavements or driveways.

Very high insulation and moisture protection requirements are met (special seals).

Application: Illumination of buildings or trees.

Light distribution 80

Built-in ballast and igniter. Power consumption 70W / luminous efficacy 300W halogen.

Required lamp: Metal halide discharge lamp HQI-TS 70W (not included).

Please order the suitable lamp from the following accessories.

Operating voltage 230V

The scope of delivery includes a recessed pot that is paved or concreted in front of the luminaire. Once the digging / masonry work has been completed, the lamp is simply inserted into the pot and connected.

simply inserted into the pot and connected.

Loadable up to 1500 kg

Tempered glass pane 15mm.

Protection class IP67 - jet water resistant

Dimensions: Outside \varnothing 205mm, recessed \varnothing 195mm, depth 375 mm.

Weight: 6,65 kg

In-Ground Lights E27 or CFL



In-Ground Light 21cm Halogen 75W adjustable



Ground recessed spotlight IP67, swivelling, halogen mains voltage up to 75W. With stainless steel cover. Highly loadable. Also as flag lighting. Suitable for motion detectors.

LB-21H

With low power for building or tree illumination.

For walk-over up to 1500 kg load.

The lamp holder can be adjusted for straight or side light distribution between 0° and 15°.

To use with halogen reflector highvolt lamp E111 230 volts up to 75 watts (2.000 h).

Housing aluminium die-cast.

Protection class IP67

Front cover: stainless steel

Size: Outer \varnothing 215mm, inner \varnothing 200mm, depth 225mm.

Included in the shipment: A plastic tube, for simplifying build-in. After finishing the digging works the light fixture must be stucked into the tube, connected, ready.

Weight: 3,7 kg



Groundlight 25cm Outdoor Uni E27 1500 kg



Stable recessed floor spot made of cast aluminium for outdoor use, with removable glare shield.

Exhibit with small scratches at a special price.

LB-25E

Stable recessed floor spot made of cast aluminium for outdoor use. Highly loadable, can be driven over, symmetrical distribution. Also as flag lighting.

Material Die-cast aluminium with cover ring of V2A highly polished.

Removable 3-sided aluminium cover.

With removable aluminium reflector (one small dent).

All types of bulbs with E27 socket can be used.

Please order a suitable lamp from the range of accessories.

Operating voltage 230V

Weight load: 1500kg with the enclosed cover

IP67 housing

Dimensions \varnothing 246mm, mounting depth 289mm, mounting hole \varnothing 200mm.

Weight: 5,5 kg



Inground Light 1.8 tons 26cm Halogen 75W Square

Low-voltage stainless steel recessed floor spotlight for outdoor use. Can withstand heavy loads, can be driven over, symmetrical distribution. Also as flag lighting.

LB-26H-SV



Dasar Up Ground Light Outdoor IP67



Delicate recessed floor luminaire E27. Visible from the side, for terrace, garden, wayside in parks and grounds.

Discontinued model
LB-702

Materials: Aluminum and PC. Stainless steel bezel.

No walkover.

For E27 lamp, max. ø 48mm, length 130mm, max. 35W

Please order the bulb extra.

Supply voltage 230V

Aperture diameter 133mm, 62mm head diameter, height 107mm. Mounting cutout Ø 131mm, depth 160mm.

Protection degree: IP67

Discontinued model - only small quantities

Weight: 0,95 kg

Step- / Floor Lights



LED Floor Light Wall Light with Schuko Cable IP65



Bright LED floor spotlight for standing or screw-on mounting. For indoor or outdoor use IP67. As bright as 150W halogen. For architectural lighting, facades, walls, sculptures.

LB-H01

Also for mobile use, such as garden party, wedding, castle festival ...

Scattering angle: 130

With power LED

Power: 15W

Light colour: 3000K warm white

Luminous flux: 886 Lm

Lifetime: 25000 h

Operating voltage: 200V - 265V

With 3m connection cable and safety plug

Energy label D (A-G)

Housing die-cast aluminium dark grey powder-coated

Low operating temperature - no risk of burns.

Protection class: IP65

Dimensions:

Height 170mm

Diameter 125mm

Weight: 2,15 kg

Recessed LED In-Ground Lights



LED Ground-Light IP65 Blue / Green Outdoor



Recessed floor luminaire with 24 LEDs shining blue or green. Walkable. Can be installed in the ground, garden or terrace.

Greatly reduced price due to small optical defects. Full functional guarantee.
LB-LD002B

Angle of radiation 18°

Loadable up to 500 kg

Connection voltage 12V

Power consumption 1,2 watts

With 100cm connection cable.

A 12V transformer is required for operation.

Maximum housing temperature < 50°C - Human touch touch-safe.

Moisture protected IP65

Aluminum housing

Dimensions:

Orifice round Ø 104mm

Installation cutout: Ø 82mm

Installation depth 117 mm (without plastic pot 80mm)

Discontinued items – low residual stocks

Weight: 0,65 kg



LED garden spotlight floor recessed spotlight color change for outdoor



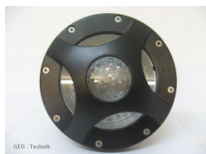
Floor spotlight garden lamp IP65 with 107 LEDs. Available in blue or with color change. Installation in floor, wall or ceiling possible. Ideal for garden or home lighting. Remaining items LB-LD011

Angle of radiation 18°
 Available in the following versions: With automatic color change every 2 seconds.
 (On request also available with blue LEDs)
 Loadable up to 500 kg.
 Outdoors, the installation should only be diagonally or horizontally in order to avoid water accumulation on the protective screen.
 Connection voltage 12V
 Power consumption 3.2 watts
 A 12V transformer is required for operation. Several LED spotlights can also be operated via one transformer.
 Moisture protected IP65
 Maximum housing temperature < 50°C - Human touch touch-safe.
 Aluminum housing with 100cm connection cable.
 Dimensions: ø 155mm, depth 125mm

Out-of-sale merchandise – exhibition merchandise – no longer reorderable – warranty 12 months
 no exchange – no return possible.
 Weight: 1,05 kg



LED Floor Recessed Light Outdoor Spotlight, Blue IP65



With 107 LEDs, bright blue. Very massive. Installation in floor, wall or ceiling possible.
 Sale items – Remaining stock: 1 pcs.
 LB-LD014B

Beam angle 18°.
 Holds up to 500 kg.
 Outside the installation may take place only horizontally or diagonally in order to avoid accumulation of water on the glass.
 Connection with 12V transformer with a minimum of 3.2 watts.
 With 100cm connection cable.
 Maximum case temperature < 50 ° C - Human Touch safe to touch.
 Humidity-proof IP65
 Aluminum casing ø 155mm, depth 125mm.
 Weight: 1,05 kg



LED Recessed Light matte IP65 60mm













12V LED spotlight for installation with 4 LEDs, white or blue. For indoor pool, bath or terrace.
 LB-LD150

Delicate luminaire for wall or floor installation in bathroom, WC, terrace.

Stainless steel trim.
 Matt cover glass made of scratch-resistant plastic.
 With 4 LEDs in white.
 Extremely long life.
 Connected voltage 12V
 Power consumption only 0.3 Watt
 A wound 12V transformer or LED power supply is required for operation.
 Moisture-proof IP65
 A 12V LED power supply or a 12V wound power transformer is required for operation.
 Maximum enclosure temperature < 50°C - Human touch safe.
 Load capacity 300kg (walkable)
 Protection class: IP65

Dimensions:
 Outside ø 60 mm,
 recessed ø 40 mm,
 luminaire depth 55mm
 Installation depth 70 mm
 Weight: 0,15 kg

 	<p>Power LED In-Ground Light Outdoor 3W</p>	<p>Stainless steel LED luminaire for outdoor use with 80mm diameter. LB-LD152</p> <p>Powerful luminaire for wall or floor installation with stainless steel trim. With three white high-performance light-emitting diodes and glass cover. Extremely long service life. Light distribution 60°. Power consumption only 3W Light colour warm white 3000K With connecting cable 5 m long. Operating voltage 230V AC Decorative ring made of V2A stainless steel. Load capacity 500kg (walkable), Moisture-proof IP67</p> <p>Dimensions: Outside ø 80 mm, recessed ø 70 mm, Installation depth 80 mm Weight: kg</p>
 	<p>Power LED In-Ground Light Outdoor 3W</p>	<p>LED recessed luminaire for outdoor use with 100mm diameter. LB-LD153-3</p> <p>Powerful luminaire for wall or floor installation with stainless steel trim. With three white high-performance LEDs and glass cover. Extremely long service life. Light distribution 60°. Power consumption only 3W Light colour warm white 3000K With connecting cable 5 m long. Operating voltage 230V AC Decorative ring made of V2A stainless steel. Load capacity 500kg (walkable), Moisture-proof IP65</p> <p>Dimensions: Outside ø 100 mm, recessed ø 75 mm, Installation depth 80 mm Weight: kg</p>
	<p>Robust LED In-Ground Light Outdoor 6W</p>	<p>Burried LED fixture with bright power LED 120mm diameter. LB-LD153-6</p> <p>Powerful luminaire for wall or floor installation with stainless steel trim. With six white high-performance LEDs and glass cover. Extremely long service life. Light distribution 60°. Light colour: warm white 3000K or 4000K With connecting cable 5 m long. Operating voltage: 230V Power consumption only 6W Decorative ring made of V2A stainless steel Load capacity 500kg (walkable) Moisture-protected IP65</p> <p>Dimensions: Outside ø 120 mm, recessed ø 95 mm, Installation depth 80 mm Weight: kg</p>

	<p>Power LED Recessed Light Outdoor 1W</p> 	<p>Very small high-power LED luminaire for kitchen, bathroom, stairs, terrace or garden. 1 watt power. LB-LD155</p> <p>Petite light for wall or floor mounting with stainless steel trim. With a white high-emitting diode and cover plate of glass. Extremely long life-time. Warm white 3000K or 4000K pure white (on request 6000K cold white) Luminous output: 90 lm At a distance (wall / floor / ceiling) by 1 meter gives a light diameter of about 50cm / 20Lx. Only 1W power consumption. Operating current: 350 ma The required LED driver 350mA has to be ordered extra. With connection cable 2 m long. Decoration ring made of V2A steel. Load capacity 300kg (walk), Protection degree: IP67 watertight Maximum case temperature: < 40°C - Human touch, safe to touch. Dimensions: Front ring: ø 41 mm Fixture diameter: 28mm Recessed plastic tube: ø 39 mm max depth with tube: 90 mm Weight: 0,3 kg</p>
	<p>LED In-Ground Spotlight asymmetrical Outdoor 3W IP67</p>	<p>Small recessed luminaire LED ground spotlight with laterally inclined light emission for wall, plant, small building. LB-LD170</p> <p>Compact light for wall or floor mounting with stainless steel trim. Surprising bright light beam with nice, warmwhite colour, like an incandescent lamp. The light beam is swiveled to one side - perfect for lighting of objects. With 2 white power LEDs and glass cover plate. Extremely long service life. Light beam 45° Warm white 3000K Luminous output: 160 lm Light beam diameter 150cm at 2m distance. Only 3W power consumption. With connection cable 20 cm. Operating voltage 24V DC. Decoration ring made of V2A stainless steel. Load capacity 500kg (walk over) Protection degree: IP67</p> <p>Dimensions: Outer diameter 55 mm, mounting ø 47 mm, depth 80 mm. Including separate plastic inground box Weight: 0,4 kg</p>
	<p>In-Ground Light LED-20 Inox Outdoor</p> 	<p>Outdoor ground light with 20 LEDs white, 12cm diameter. Walkable and loadable up to 1 to. Low remaining stock - no longer available for reorder. LB-LD20</p> <p>Beam angle 18° (narrow beam). Luminous intensity 14 lux at 3m distance. Light colour 5000K daylight With stainless steel trim and clear safety glass. Loadable up to 1000 kg. Operating voltage: 230V AC Power: 2 Watt With 100cm connection cable. Moisture-proof IP65. Maximum housing temperature < 50°C - human touch safe. Housing cast aluminium ø 114mm, depth 117mm.</p> <p>Discontinued model - no longer available for reorder. Successor: LB-LDN09SB or LB-LD152 Weight: 0,85 kg</p>



LED Inground Spotlight Outdoor 200mm 18W Power



Very powerful groundlight with 18 watt LEDs in white, red, green, blue or yellow color. Bright beam throw 60° for tree or facade lighting.
LB-LD21

New technology LED
Suitable for many architectural applications
Light distribution: Medium beam 60° lenses
LED life: Approx 10 years (continuous use)
Light colour: 3000K warm white, 4000K neutral white, red, green, yellow or blue.
Operating voltage: 230V 50 - 60Hz
LED driver is included
Power: 18W
Complies to CE standards
Cover ring stainless steel, aluminium body
Protection degree: IP67
Diameter: 200mm
cut-out: 158mm
Depth: 90mm
Weight: 1,6 kg



LED Underground Light asymmetrical 22W



Bright recessed luminaire with slightly inclined beam for tree or façade illumination
Minimum order quantity: 4 pieces
LB-LD23-22

With 15 power LEDs
Luminous flux: 90 - 100 Lm/W
Average life 10 years
Diffusion angle: 40
Light colour: 3000K warm white (on order also 5000K cool white)
Operating voltage: 220V - 240V 50 - 60Hz
Power consumption 22 Watt
The LED driver is already integrated in the luminaire
Recessed aluminium housing with stainless steel ring
Dimensions: ø 230mm, depth 290mm,
Protection class: IP67
Weight: kg



LED Ground Spotlight 24W IP65

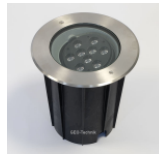


Very bright LED ground spotlight for outdoor use IP65. As bright as 250W halogen. For architectural lighting, facades, tree, sculpture.
LB-LD24

Scattering angle: 30° or 60
With high-power LEDs
Light colour: 4000K neutral white
Luminous flux: 1920 Lm
From 10 pcs. also available as RGB version with IR remote control for infinitely variable colour change at extra charge.
Operating voltage: 85V - 265V (from 10 pcs. also 12-24V DC available)
Recessed housing with stainless steel ring ø 250mm
Installation cut-out: 234mm
Depth: 95mm
Protrusion: only 3mm (low risk of tripping)
Low operating temperature - no risk of burns.
The luminaire must not be rolled over by vehicles !
Protection class: IP65
Minimum order quantity: 2 pcs.
Weight: 2 kg



LED Underground Light adjustable 25W



Adjustable radiation for tree or façade illumination
LB-LD25-22

With COB Power LED
Luminous flux: 90 - 100 Lm/W
Average life 10 years
Adjustable +/- 15° inclination
Diffusion angle: 40° (from 10 pcs. also 6-10-25-40-60°)
Light colour: 4000K natural white (on order also 3000K warm white or 5000K cool white)
Operating voltage: 100V - 240V 50 - 60Hz
Power consumption 25 Watt
The LED driver is already integrated in the luminaire
Recessed aluminium housing with stainless steel ring
Dimensions: ø 260mm, depth 280mm,
Supplied with plastic mounting sleeve for setting in concrete
Mechanical load capacity: 5 Nm
Protection class: IP67
Minimum order quantity: 4 pcs.
Weight: 4,7 kg



LED Ground Spotlight 24W RGB DMX Coloured



Very powerful LED recessed floor luminaire coloured, f. Outdoor IP67. Easy control via DMX512 for architectural lighting, facades, tree, sculpture.
LB-LD41

In-ground recessed colour changer
Diffusion angle 25 ° or 40 °
With high-power LEDs RGB equipment in de colors red, green and blue.
Built-DMX-512 driver.
DMX512 connection
The start address is adjustable.
With several floor lights you can control the colors synchronously or also control each light individually.
There are 512 individual control channels.
Infinitely variable color transitions, static colors and white light can be generated.
Several lights can be operated together with a power supply and a controller.
Operating voltage 24V
Consumption: 27W
A 24V power supply, and a DMX control unit must be ordered extra.
Housing with stainless steel ring ø 165mm, depth 50mm,
Protection degree: IP67
Minimum order quantity: 3 pcs.
Weight: 2 kg



Drive Over In-Ground Light LED Dual



Outdoor LED recessed luminaire. 2-sided radiation in 2 directions.
This luminaire can only be ordered for projects - minimum order quantity 10 pcs.
LB-LD42

For marking pavements or pedestrian zones.
Loadable up to 500 kg
High-brightness, horizontal radiation to two sides.
Beam angle approx. 40° degrees per segment.
With 12 white LEDs
Light colour 6000K bright white
Power: 2W
Connection voltage 230V AC
The luminaire has a cable gland
Cover: cast aluminium, matt grey, height 18mm.
Maximum housing temperature < 50°C - human touch safe.
Protection class: IP66
Impact resistance: IK09
Dimensions: Outer ø 100 mm, recessed ø 75 mm, depth 56 mm
Weight: 0,75 kg



LED Inground Spotlight RGB Coloured 173mm IP67



Flat LED recessed floor luminaire 17W with colour change, for outdoor IP67. Operation via 24V DC. For architectural lighting, facades, tree, sculpture. LB-LD45

Beam angle 30 deg
 With 6 power LEDs RGB in red, green and blue.
 Built-in driver.
 Operating voltage 24V DC
 With connection cable 50cm
 Built-in housing with stainless steel ring ø 173mm, depth 38mm,
 Installation cut-out 150mm
 Installation depth: 50mm
 Protection class IP67

A 24V power supply and an RGB control unit must be ordered separately. With several floor luminaires, you can control the colours synchronously or control each luminaire individually.

Several luminaires can be operated together via one power supply and one control unit.
 Weight: 1 kg



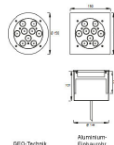
Drive Over In-Ground Light LED Belkis Dual

Outdoor LED recessed luminaire. 2-sided radiation white, blue or green-red in 2 directions.
 This luminaire can only be ordered for projects - minimum order quantity 10 pcs.
 LB-LD52

For marking driveways, walkways or car parks.
 Loadable up to 1000 kg
 Horizontal radiation to two sides.
 Beam angle approx. 40° degrees per segment.
 Available with white, blue or yellow LEDs or as a free/closed signal light with red light on one side and green light on the other side.
 Power: 2W
 Connection voltage 230V AC
 The luminaire has a cable feed-through
 Cover: cast aluminium, matt silver-grey, height 15mm.
 Maximum housing temperature < 50°C - human touch safe.
 Protection class: IP67
 Dimensions: Outer ø 90 mm, recessed ø 78 mm, depth 53 mm
 Weight: 0,75 kg



LED recessed floor spotlight coloured DMX Belkis RGB 27W



Very powerful LED recessed floor luminaire coloured, f. Outdoor IP67. Easy control via DMX512 for architectural lighting, facades, tree, sculpture. LB-LD53RGB

In-ground recessed colour changer
 Diffusion angle 25 ° or 40 °
 With high-power LEDs RGB equipment in de colors red, green and blue.
 Built-DMX-512 driver.
 DMX512 connection
 The start address is adjustable.
 With several floor lights you can control the colors synchronously or also control each light individually individually.
 There are 512 individual control channels.
 Infinitely variable color transitions, static colors and white light can be generated.
 Several lights can be operated together with a power supply and a controller.
 Operating voltage 24V
 Consumption: 27W
 A 24V power supply, and an RGB control unit must be ordered extra.
 Housing with stainless steel ring ø 165mm, depth 50mm,
 Protection degree: IP67
 Minimum order quantity: 3 pcs.
 Weight: 2 kg



LED Ground Spotlight 15W



Very bright LED ground spotlight for outdoor use IP65. As bright as 150W halogen. For architectural lighting, facades, tree, sculpture.
LB-LD53W

In-ground recessed powerful spotlight
Diffusion angle 45° (at 10 pcs. also 5°/15°/25°/30°/45°/60°/90°/120° on order)
With high-power LEDs
Light colour: 4000K pure white (at 10 pcs. also 3000K, red, green, blue or RGB on order.)
On surcharge also available with RGB LEDs and IR remote control for smooth colour changings.
Luminous output: 1350 Lm
Operating voltage: 85V - 265V (at 10 pcs. ordering quantity also available in 12-24V DC)
Consumption: 24W
Housing with stainless steel ring ø 200mm
Cut out diameter: 190mm
Depth: 90mm
Overhang only 3mm (low risk of tripping)
Low operating temperature - no risk of burning.
The luminaire may not be rolled over by vehicles.
Protection degree: IP65
Minimum order quantity: 2 pcs.
Weight: 2 kg



Drive Over Light LED Assos, red, green, white



Massive LED ground recessed luminaire IP67, for marking roads and car parks, double-sided distribution.
LB-LD56

For marking traffic routes, access roads, car parks.
With 4 + 4 LEDs and glass lens.
Beam angle approx. 60° degrees per segment.

LEDs can be ordered optionally
white, blue or bicolour - one side red, the other side green.

LED life expectancy approx. 50,000 hrs.
Power: 4W
Operating voltage 230V AC
Loadable up to 1500 kg
Maximum enclosure temperature < 50°C - human touch safe.

Dimensions:
Outside ø 200mm, recessed ø 170mm, depth 80mm.
Cover panel Solid cast aluminium, grey powder-coated, height 15mm.
Weight: 2,5 kg






Drive Over Light LED Teo 5 tons



Massive LED ground recessed luminaire IP67, for marking roads and car parks, multi-directional distribution.
LB-LD58

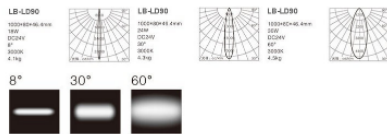
For marking traffic routes, access roads, car parks.
With 4 + 4 LEDs and glass lens.
With sturdy aluminium cover and radiation on 1 side, 2 sides, 3 sides or 4 sides.

Beam angle 60° degrees per segment.
LEDs optionally: white (on request blue, red, green or yellow)
LED life expectancy approx. 50,000 hours.
Power: 4-sided: 12W
Operating voltage 230V AC (on request 12V or 24V dc)
Maximum enclosure temperature < 50°C - human touch safe.
Loadable up to 5000 kg
Cover panel Solid cast aluminium, height 15mm.
Painting: anthrazite RAL 7016 powder-coated
Protection class: IP67 (water and storm protected).
Impact resistance: IK10
Dimensions: Outside ø 240mm, recessed ø 159mm, depth 177mm.
Weight: 2,2 kg

	<p>In-Ground Light LED 12 Beam round</p>	<p>Drive-in LED recessed luminaire for outdoor use. 12-beam all-round distribution LB-LD66</p> <p>Round aperture with 12 segments, circular radiating. With 12 LEDs Light color 6000K white Resilient up to 500 kg Connection voltage: 230V ac Power: 1W Connection cable: 50cm Cover: cast aluminum, gray, height 18mm Protection class: IP66 Maximum housing temperature < 50°C - human touch-proof. Dimensions: outside ø 100 mm, cut-out ø 75 mm, depth 74 mm Weight: 0,28 kg</p>
	<p>In-Ground Light LED 2 Beam round</p>	<p>Round, passable LED recessed luminaire for outdoor use. Radiating to 2 sides LB-LD67</p> <p>Round aperture with 2 segments, radiating horizontally. With 12 LEDs Light color 6000K white Resilient up to 500 kg Connection voltage: 230V ac Power: 1W Connection cable: 50cm Cover: cast aluminum, gray, height 18mm Protection class: IP66 Maximum housing temperature < 50°C - human touch-proof. Dimensions: outside ø 100 mm, cut-out ø 75 mm, depth 74 mm Weight: 0,28 kg</p>
	<p>Pisa 3 Power LED Recessed Luminaire RGB Outdoor IP67</p>	<p>Recessed aluminium luminaire with 3x 2W Power LED f. Indoor and outdoor. White light or colour change. Discontinued item - Remaining stock LB-LD77</p> <p>Light distribution: 25° Operation via power supply 700mA (please order separately). For RGB colour control, an additional RGB control unit must be ordered. Several luminaires can be operated together via one power supply and one control unit. Power consumption: 6 Watt Maximum housing temperature < 50°C - human touch safe. Protection class IP67 (submersible in water for short periods). Installation housing with stainless steel ring ø 108mm Mounting hole ø 104mm, mounting depth 114mm Discontinued item - remaining stock Weight: 0,7 kg</p>



In-Ground LED Light Bar RGB

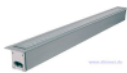


Step-proof LED recessed luminaire, light rail for outdoors. With colour change.
LB-LD90RGB

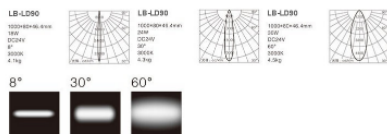
Recessed light with colour changer for inground recessed installation. New technology CREE LED. RGB (Red - Green - Blue) colour mixing system or white LEDs. Continuous colour changing or static lighting. Strobe or dimming functions. Suitable for many architectural applications.

Technical data:

Main voltage: from 85 to 265V 50/60Hz or 24V DC on order
Consumption max: 36W
LEDs generate light without UV or infrared components and they have a very low power consumption.
36 LED CREE XR 1.2W
Available in 8°, 30°, 60°, elliptical or 110° without lenses.
Very long life - aprox. 10 years LED life (continuous use)
2 cable gland for power supply (M16)
2 cable gland for DMX in/out (PG9)
Works in stand alone mode or via DMX signal (8 channels)
Aluminium body
Grey (standard) epoxy powder paint.
Working Temperature: -25°C - +55°C
Temperate glass (walk-over).
Protection degree: IP67
Shock resistance: IK06
Complies to CE standards
Dimensions: 1000 x 800 x 464mm
Weight: 7 kg



In-Ground LED Light Bar 100cm IP67

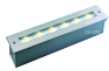


Step-proof LED recessed luminaire, light rail for outdoors. White light.
LB-LD90W

Recessed light with colour changer for inground recessed installation. New technology CREE LED. RGB (Red - Green - Blue) colour mixing system or white LEDs. Continuous colour changing or static lighting. Strobe or dimming functions. Suitable for many architectural applications.

Technical data:

Main voltage: from 85 to 265V 50/60Hz or 24V DC on order
Consumption max: 36W
LEDs generate light without UV or infrared components and they have a very low power consumption.
36 LED CREE XR 1.2W
Available in 8°, 30°, 60°, elliptical or 110° without lenses.
Very long life - aprox. 10 years LED life (continuous use)
2 cable gland for power supply (M16)
Aluminium body
Grey (standard) epoxy powder paint.
Working Temperature: -25°C - +55°C
Temperate glass (walk-over).
Protection degree: IP67
Shock resistance: IK06
Complies to CE standards
Dimensions: 1000 x 800 x 464mm
Weight: 7 kg



LED In-Ground Light Bar 32cm asymmetric

Step-resistant LED recessed floor luminaire 6W-9W asymmetric, light track f. Outdoor. Illuminates a low wall or a low sign.
LB-LD92

Recessed light for wall or in-ground recessed installation indoor and outdoor. With high power LED and asymmetrical optics for slightly swivelled light distribution.

LEDs produce light without UV or infrared components and they have a very low power requirement.

6 x Power LED 1W

Light colour 3000K warm white (on request also cold white 6000K).

Light intensity 250 lm

Beam angle: 50°

Including LED driver

Supply voltage 230V 50 / 60Hz

Power consumption max.: 7W

Very long life - aprox. 10 years LED life (continuous use)

Metal cover frame matte brushed 328mm x 65mm

Safety glass (walk-over).

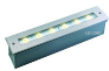
With extra aluminium pot for recessed installation

Installation hole: 316mm x 57mm, depth 80mm

Protection degree: IP67

Complies to CE standards

Weight: 2,1 kg



LED recessed floor luminaire RGB 33cm angular 9W IP67



Step-proof LED recessed luminaire asymmetric, with colour change f. Outdoor. 32cm long. Illuminates a wall or a low advertising sign.
LB-LD93

Recessed luminaire with white light for recessed wall or floor installation indoors and outdoors.

With high-power LED and asymmetrical optics for slightly inclined light distribution.

LEDs produce light without UV and infrared components and have very low power consumption.

6 x Power LED 1W

Alternatively available in RGB version for colour change:

With 6 x RGB LED 1,5W

An RGB controller 24V is required for control.

Luminous intensity 250 Lm

Beam angle 45° asymmetrical

LED driver included

Operating voltage 24V DC

Max. power consumption: 7W / 10W

Very long life, approx. 10 years (continuous operation)

Matt brushed metal frame 328mm x 65mm

Safety glass cover (can be walked on).

With aluminium recessed box

Mounting hole: 316mm x 57mm, depth 80mm

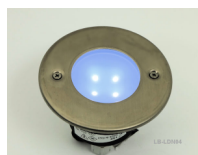
Protection class IP67

CE compliant

Weight: 2 kg



LED recessed floor luminaire Terrace Nautic coloured IP68



Round recessed luminaire, walkable, with 4 LEDs. For indoor and outdoor use, also for pavement or swimming pool.

Remaining stock.

LB-LDN04SB

Luminaire for recessed floor or wall mounting.

With 4 powerful light-emitting diodes with a long service life of 50,000 h.

LED light colour: optionally green or red (white or blue can be ordered from 10 pieces).

A 10 V LED supply is required for operation.

Power: 0.5 W

2 cable glands PG7 make it easy to wire several luminaires in a row.

Max. 20 luminaires can be operated with one power supply.

Lens: VA stainless steel, lens made of highly stable plastic, satin finish.

Including plastic recessed box.

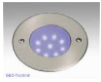
Load capacity 1000 kg

Protection class IP68 / 3m immersion depth.

Maximum housing temperature < 50°C - human touch safe.

Dimensions: Outer ø 89mm, mounting cut-out 57-80mm, mounting depth 73mm.

Weight: 0,2 kg



LED Recessed Ground Light Nautic
9

Round fixture, walk-over, with 9 LEDs, available in blue, red, green or white.
For indoor, outdoor, walkway or swimming pool.
LB-LDN09SB